

# LET'S TALK PLASTIC



EACH YEAR THE WORLD PRODUCES  
**+385 MILLION TONS  
OF PLASTIC**



ENOUGH PLASTIC IS THROWN AWAY EACH YEAR TO CIRCLE THE EARTH FOUR TIMES.



**8 MILLION TONS**  
OF PLASTIC ENDS UP IN THE OCEANS EVERY YEAR

## KNOWLEDGE IS POWER

A FEW THINGS TO KNOW ABOUT RECYCLING



THE NUMBER AND TRIANGLE IDENTIFY THE TYPE OF PLASTIC, **NOT** WHETHER IT IS OR ISN'T RECYCLABLE.



OUT OF THE SEVEN TYPES OF PLASTIC, **ONLY TWO (#1 and #2) ARE TYPICALLY RECYCLED.**



**WISHCYCLING**  
TOSSING QUESTIONABLE ITEMS INTO THE RECYCLING, **HOPING** THEY CAN BE RECYCLED.

## GET TO KNOW THE NUMBERS



PET	HDPE	PVC	LDPE	PP	PS	OTHER
WIDELY RECYCLED		OCCASSIONALLY RECYCLED		NOT COMMONLY RECYCLED		

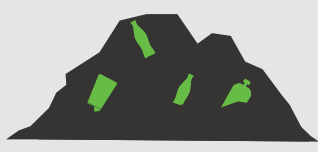


GENERALLY, THE HIGHER THE NUMBER, THE LESS RECYCLABLE. CHECK WITH YOUR LOCAL RECYCLING CENTERS TO SEE WHAT PLASTICS THEY ACCEPT IN THEIR RECYCLING PROGRAMS.

## CHANGING THE FUTURE OF PLASTIC

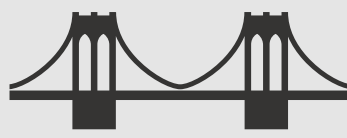


BRIGHTMARK IS BUILDING AN ADVANCED PLASTIC RENEWAL FACILITY IN ASHLEY, INDIANA.



**DIVERT 100,000 TONS**

IT WILL DIVERT 100,000 TONS OF PLASTIC WASTE EACH YEAR FROM LANDFILLS AND INCINERATORS



**SEVEN BROOKLYN BRIDGES**

THAT'S MORE PLASTIC THAN THE WEIGHT OF SEVEN BROOKLYN BRIDGES



THE FACILITY WILL TAKE ALL TYPES OF PLASTIC, INCLUDING STRAWS, PLASTIC WRAP, FOOD PACKAGING, CHILDREN'S TOYS, AND MEDICAL WASTE.

*and turn it into*

18 MILLION GALLONS OF ULTRA-LOW SULFUR DIESEL AND NAPHTHA BLEND STOCKS



NEARLY SIX MILLION GALLONS OF COMMERCIAL GRADE WAX EACH YEAR



WHICH WOULD POWER AN AVERAGE VEHICLE TO CIRCLE THE EQUATOR **21,420 TIMES**



WHICH IS ENOUGH TO MAKE **79 MILLION CANDLES**



**BRIGHTMARK**  
REIMAGINE WASTE

Join us on our mission to #ReimagineWaste  
[brightmark.com/plastics-renewal](http://brightmark.com/plastics-renewal)